

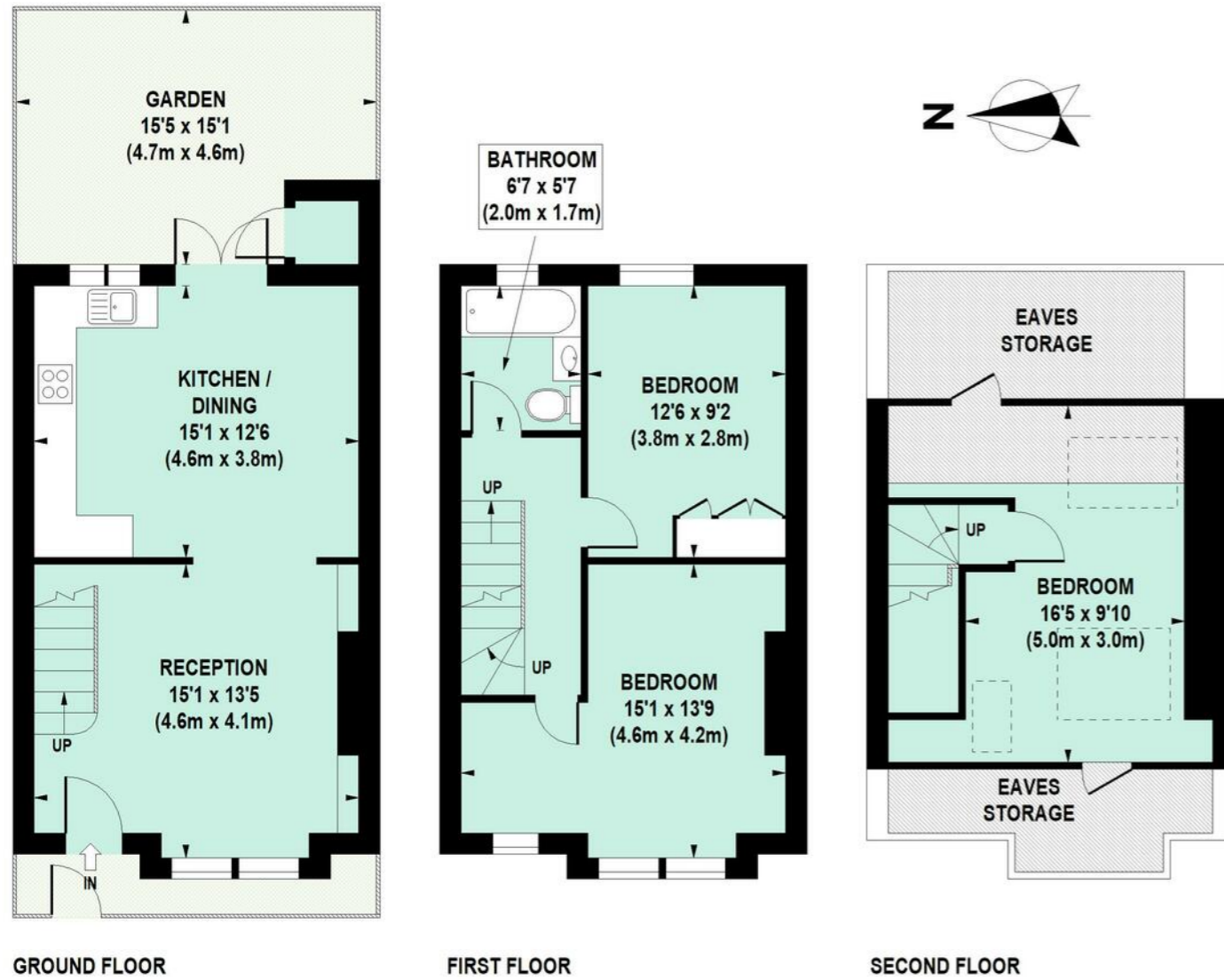
Thorpebank Road, W12

Approximate Gross Internal Area 94 sq m / 1012 sq ft
Excluding Eaves Storage of Approximately 14 sq m / 151 sq ft

SALES • LETTINGS • MANAGEMENT

PHILIP WOOLLER

SALE AGREED



Floor Plan produced for Philip Wooller by Mays Floorplans © . Tel 020 3397 4594
Illustration for identification purposes only, not to scale
All measurements are maximum, and include wardrobes and window bays where applicable



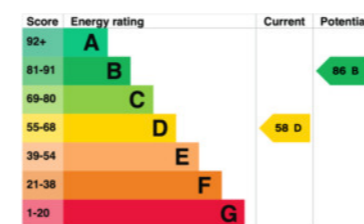
THORPEBANK ROAD W12 • SHEPHERD'S BUSH
£825,000 FREEHOLD

IMPORTANT NOTICE

1. Particulars: These particulars are not an offer or contract, nor part of one. You should not rely on statements by Philip Wooller Ltd in the particulars or by word of mouth or in writing ('information') as being factually accurate about the property, its condition or its value. Neither Philip Wooller Ltd nor any joint agent has any authority to make any representations about the property, and accordingly any information given is entirely without responsibility on the part of the agents, seller(s) or lessor(s).
2. Photos etc: The photographs show only certain parts of the property as they appeared at

the time they were taken. Areas, measurements and distances given are approximate only.
3. Regulations etc: Any reference to alterations to, or use of, any part of the property does not mean that any necessary planning, building regulations or other consent has been obtained. A buyer or lessee must find out by inspection or in other ways that these matters have been properly dealt with and that all information is correct.
4. VAT: The position relating to the property may change without notice.

EPC



- 3 double bedrooms
- Bathroom
- Reception with fireplace
- Kitchen / dining room
- Decked garden
- Partially extended into loft
- Generous ceiling heights
- EPC - D

Type
Edwardian terraced family house

Gross internal floor area
1012 sq ft / 94 sq m approx.

Nearest stations
Shepherd's Bush Market (Hamm.& City and Circle Lines) Shepherd's Bush (Central Line and overground)



An attractive and light three storey Edwardian house, typical of the area, with spacious open to hall reception leading to a kitchen / dining space at the back which opens onto a decked east facing garden - at 15ft square it's larger than average for these streets. The house offers plenty of scope for further improvement and the existing older loft conversion could be brought up to date to transform the top floor. Currently the house offers three good double bedrooms and a bathroom upstairs.

Situated at the northern end of this popular street near Dunraven Road, in this quiet western W12 enclave near Wormholt Park. It is near numerous interesting shops and restaurants as well as White City House and of course Westfield. Transport couldn't be more convenient with a bus routes and Hamm. & City and Central Line tubes close by.

