

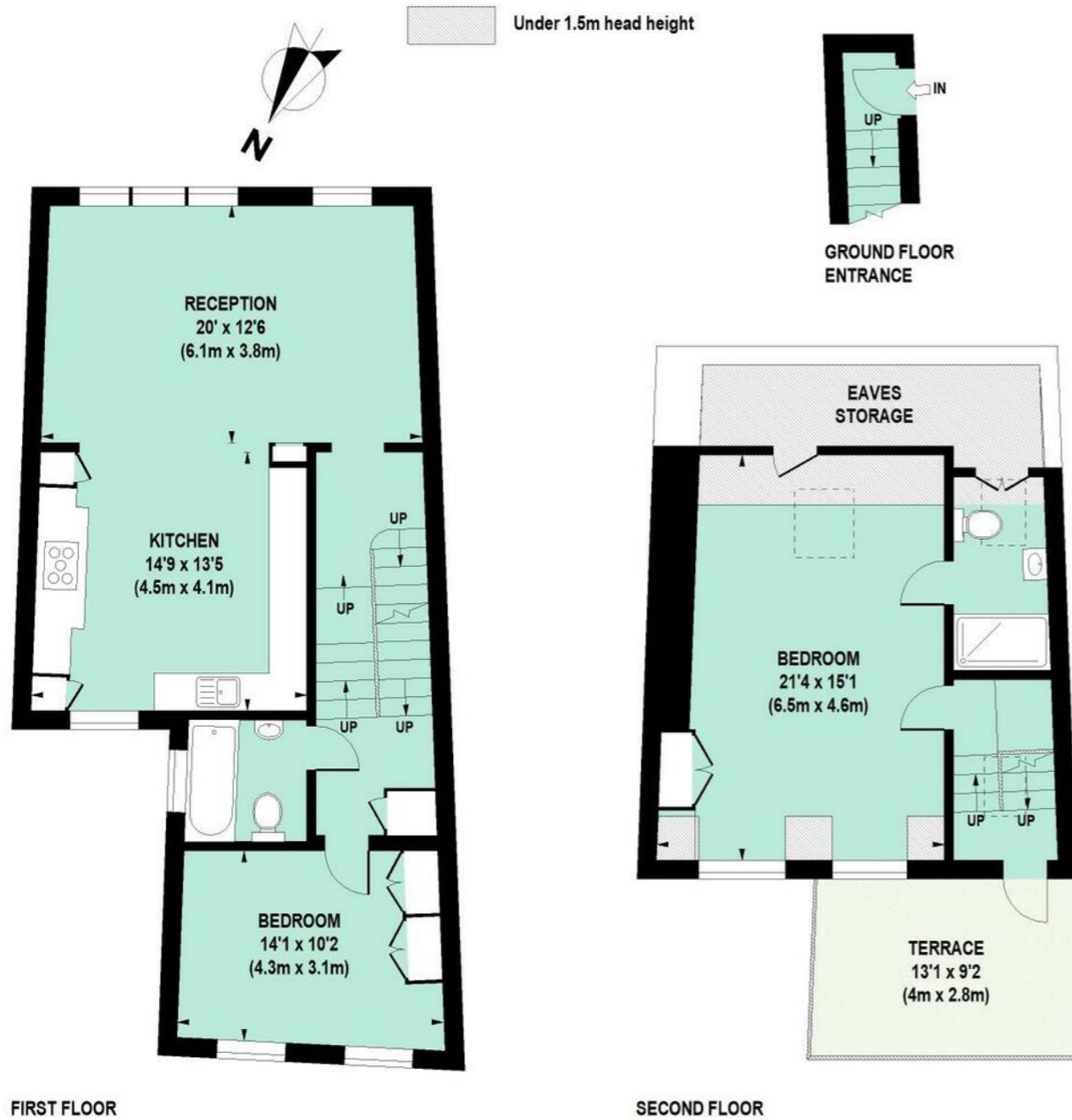
# Wendell Road, W12

Approximate Gross Internal Area 122 sq m / 1313 sq ft  
Including Eaves Storage of Approximately 8 sq m / 86 sq ft

SALES • LETTINGS • MANAGEMENT

## PHILIP WOOLLER

### FOR SALE



WENDELL ROAD W12 • WENDELL PARK  
£975,000 SHARE OF FREEHOLD

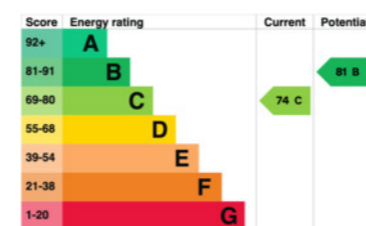
Floor Plan produced for Philip Wooller by Mays Floorplans © . Tel 020 3397 4594  
Illustration for identification purposes only, not to scale  
All measurements are maximum, and include wardrobes and window bays where applicable

#### IMPORTANT NOTICE

1. Particulars: These particulars are not an offer or contract, nor part of one. You should not rely on statements by Philip Wooller Ltd in the particulars or by word of mouth or in writing ('information') as being factually accurate about the property, its condition or its value. Neither Philip Wooller Ltd nor any joint agent has any authority to make any representations about the property, and accordingly any information given is entirely without responsibility on the part of the agents, seller(s) or lessor(s).  
2. Photos etc: The photographs show only certain parts of the property as they appeared at

the time they were taken. Areas, measurements and distances given are approximate only.  
3. Regulations etc: Any reference to alterations to, or use of, any part of the property does not mean that any necessary planning, building regulations or other consent has been obtained. A buyer or lessee must find out by inspection or in other ways that these matters have been properly dealt with and that all information is correct.  
4. VAT: The position relating to the property may change without notice.

#### EPC



- 2 double bedrooms
- 2 bathrooms (1 is en-suite)
- Reception room with wood-burner
- Generous kitchen / dining open plan
- South facing roof terrace
- Lovely uncompromised proportions
- Ample eaves storage
- Share of freehold - 956 years remaining
- EPC - C

Type  
Upper maisonette

Gross internal floor area  
1313 sq ft / 122 sq m approx.

Nearest stations  
Stamford Brook ( District Line ) Turnham  
Green Terrace (Piccadilly and District Lines)





The larger of the two flats within this well located building, this stunning interior designed upper maisonette offers near unparalleled open reception / kitchen dining space with wonderful light - the key selling point here and so hard to find. There is also good separation between the double bedrooms, each served by a bath / shower room and both having wardrobes built in and and air-conditioning. There is the exclusivity of a private ground floor entrance that gives a house-like feel. It offers a beautifully finished turn-key London home near Wendell Park with all important terrace for al fresco dining / entertaining.



It is situated at the eastern end of Wendell Road near Wendell Park and Askew Road with it's good independent shops, cafes and restaurants. Ravenscourt Park is within a short walk, as are numerous good schools and the shopping and transport hubs of Hammersmith and Westfield. Stamford Brook tube (District Line) is an approximate 10-15 minute walk.

