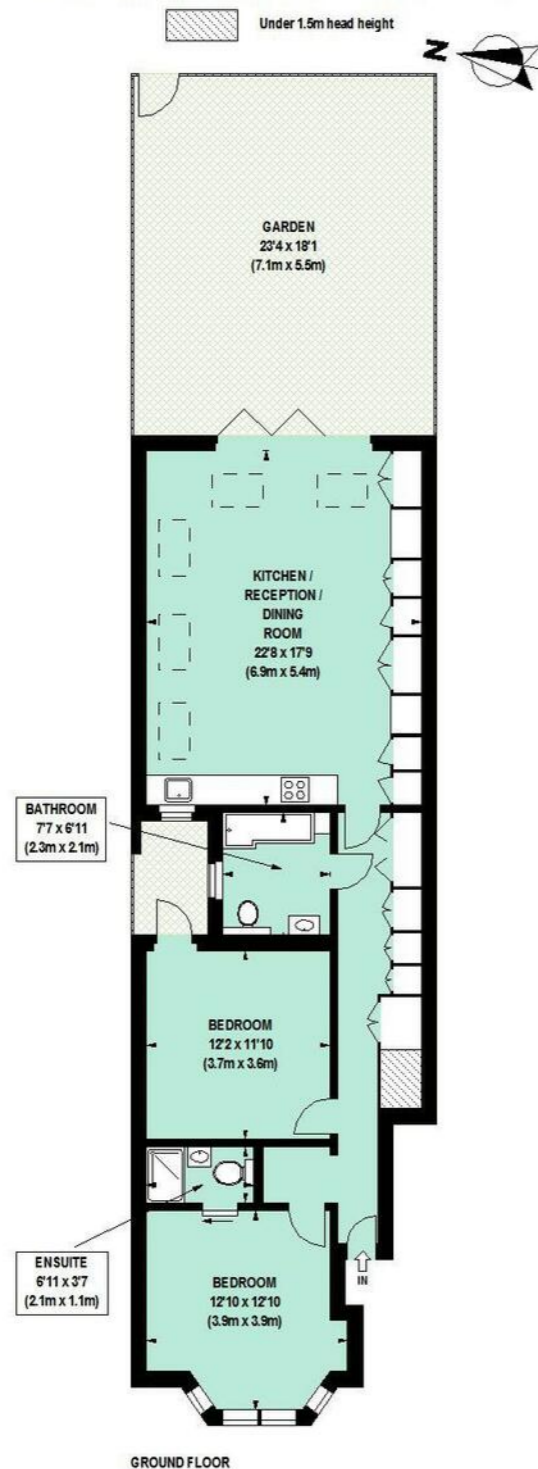


First Avenue, W3
 Approximate Gross Internal Area 89 sq m / 958 sq ft



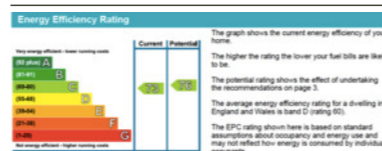
Floor Plan produced for Philip Wooller by Mays Floorplans © . Tel 020 3397 4594
 Illustration for identification purposes only, not to scale
 All measurements are maximum, and include wardrobes and window bays where applicable

IMPORTANT NOTICE

1. Particulars: These particulars are not an offer or contract, nor part of one. You should not rely on statements by Philip Wooller Ltd in the particulars or by word of mouth or in writing ('information') as being factually accurate about the property, its condition or its value. Neither Philip Wooller Ltd nor any joint agent has any authority to make any representations about the property, and accordingly any information given is entirely without responsibility on the part of the agents, seller(s) or lessor(s).
 2. Photos etc: The photographs show only certain parts of the property as they appeared at

the time they were taken. Areas, measurements and distances given are approximate only.
 3. Regulations etc: Any reference to alterations to, or use of, any part of the property does not mean that any necessary planning, building regulations or other consent has been obtained. A buyer or lessee must find out by inspection or in other ways that these matters have been properly dealt with and that all information is correct.
 4. VAT: The position relating to the property may change without notice.

EPC



SALES • LETTINGS • MANAGEMENT

PHILIP WOOLLER

FOR SALE



FIRST AVENUE W3 • ASKEW ROAD AREA
£699,950 SHARE OF FREEHOLD

- 2 double bedrooms
- Bathroom
- Shower room en suite
- Generous hall and storage
- Fabulous reception
- Kitchen open plan
- Under floor heating
- Garden with additional access

Type
 Ground floor garden flat

Gross internal floor area
 958 sq ft / 89 sq m approx.

Nearest stations
 Shepherd's Bush Market (Hamm.& City and Circle Lines) White City (Central Line) Acton central (Overground)



A particularly spacious and light ground floor garden flat with modern open plan reception / kitchen space opening onto a pretty walled garden. The neutral finish is of a high standard and the flat offers a great blank canvas with two double bed / two bathroom layout. There are ample utility and storage cupboards built in and the reception / kitchen space has under floor heating and further built-in storage. There is a useful separate access into the back garden. The property is quietly situated on the east side of First Avenue well off Uxbridge Road - a few minutes walk from both Wendell and Acton Park and the good local schools. Local shops on Askew Road are also convenient, and the shopping and transports hubs of Hammersmith and Westfield are within easy reach. The 607 bus route east along Uxbridge Road provides the fastest access to the Shepherd's Bush Central Line tube and Acton Central overland station and East Acton or White City tubes (Central Line) are within walking distance.

