

Starfield Road, W12

Approximate Gross Internal Area 179 sq m / 1927 sq ft

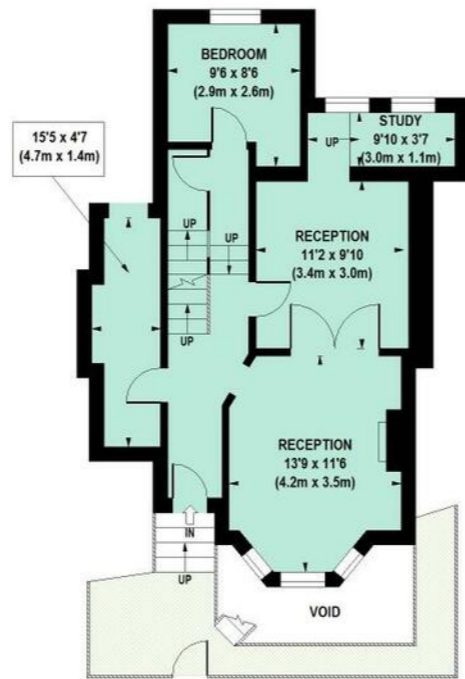
Under 1.5m head height



LOWER GROUND FLOOR



FIRST FLOOR



RAISED GROUND FLOOR

Floor Plan produced for Philip Wooller by Mays Floorplans ©. Tel 020 3397 4594
Illustration for identification purposes only, not to scale
All measurements are maximum, and include wardrobes and window bays where applicable

IMPORTANT NOTICE

1. Particulars: These particulars are not an offer or contract, nor part of one. You should not rely on statements by Philip Wooller Ltd in the particulars or by word of mouth or in writing ('information') as being factually accurate about the property, its condition or its value. Neither Philip Wooller Ltd nor any joint agent has any authority to make any representations about the property, and accordingly any information given is entirely without responsibility on the part of the agents, seller(s) or lessor(s).
2. Photos etc: The photographs show only certain parts of the property as they appeared at

the time they were taken. Areas, measurements and distances given are approximate only.
3. Regulations etc: Any reference to alterations to, or use of, any part of the property does not mean that any necessary planning, building regulations or other consent has been obtained. A buyer or lessee must find out by inspection or in other ways that these matters have been properly dealt with and that all information is correct.
4. VAT: The position relating to the property may change without notice.

EPC



SALES • LETTINGS • MANAGEMENT

PHILIP WOOLLER

TO LET



STARFIELD ROAD W12 • ASKEW ROAD AREA
£1,153.61 PW / £4,999 PCM

- 4 bedrooms
- Bathroom and shower room
- Double reception room
- Study
- Kitchen / dining / family room
- TV / Playroom / bed 4
- Terraced garden
- 2 entrances
- Storage

Type
Victorian family house

Gross internal floor area
1927 sq ft / 179 sq m approx.

Nearest stations
Stamford Brook (District Line) Goldhawk Road (Ham. & City and Circle Lines)

Council Tax Band
G



A recently renovated four bedroom Victorian family house currently offering a highly adaptable layout and with a high quality finish throughout. The house has ample reception space over two floors with fabulous fully equipped kitchen / dining / family space opening onto a generous garden, with a useful guest bedroom served by a shower room to the front of the lower floor - also ideal as a large office, playroom or TV room. On the middle floor there is a study and double reception room with interconnecting doors so could be divided if an occasional extra bedroom was required. The building is nicely set back from the street and has entrances at both lower and upper ground levels, as well as plenty of storage space. Starfield Road is a friendly family orientated street just off the southern end of Askew Road. Independent local shops and great restaurants are minutes away, as are both Wendell and Ravenscourt Parks. The area offers numerous good schools and of course the shopping and transport hubs of Hammersmith Broadway and Westfield.

