

PHILIP WOOLLER

FOR SALE



TABOR ROAD, LONDON W6 • BRACKENBURY VILLAGE
£1,700,000 FREEHOLD



- 4 double bedrooms
- Bathroom and shower room
- Double reception room
- Study / bedroom 5
- Kitchen / dining / family room
- Patio garden
- Useful double entrance
- Potential to add pod room - PP granted.
- EPC -

Type
Victorian family house

Gross internal floor area
1798 sq ft / 167 sq m approx.

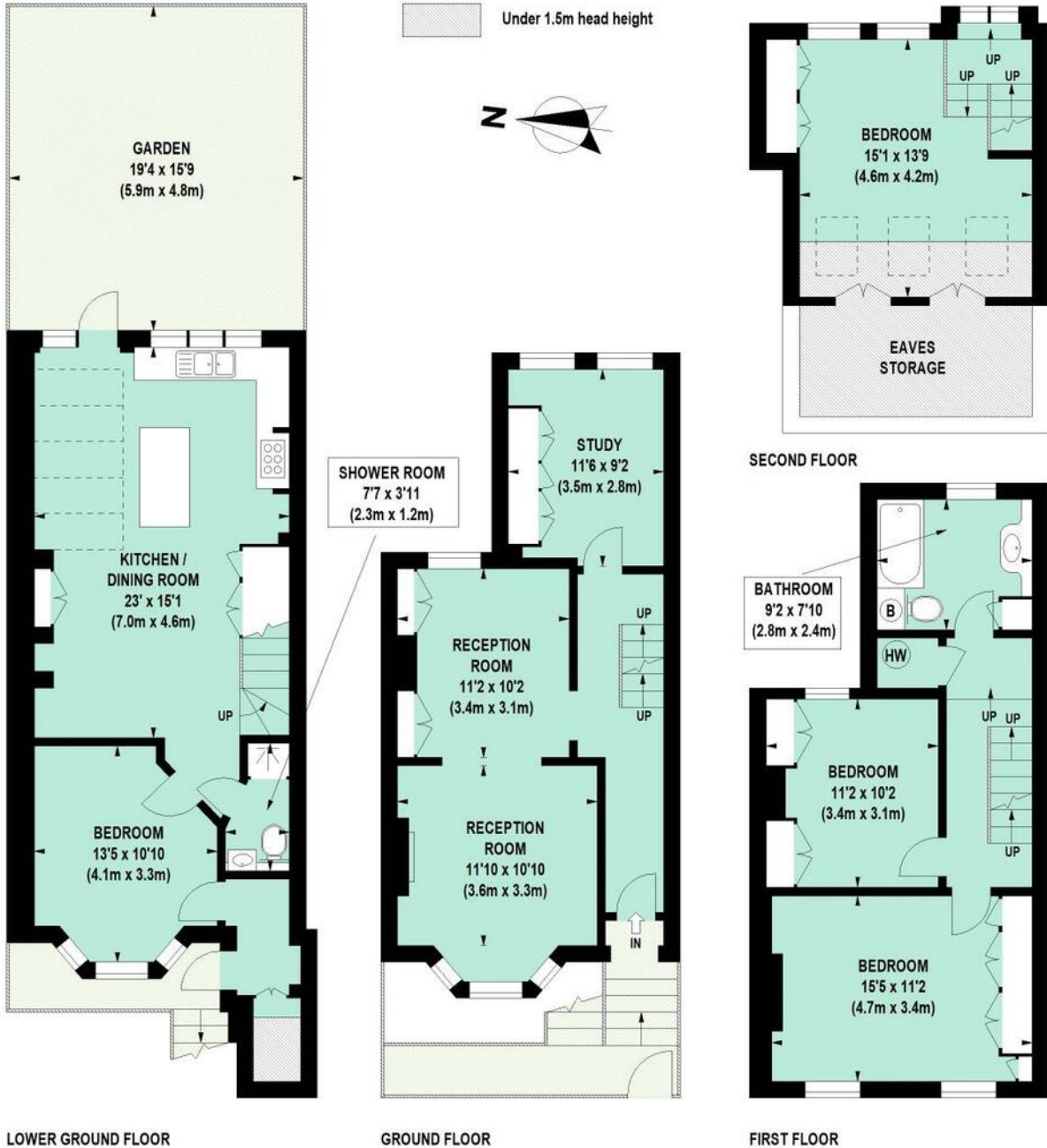
Nearest stations
Hammersmith Broadway (District, Piccadilly and Hamm & City Lines)
Goldhawk Road (Hamm & City and Circle Lines)

PHILIP WOOLLER

FOR SALE

Tabor Road, W6

Approximate Gross Internal Area 167 sq m / 1798 sq ft
Including Eaves Storage of 8 sq m / 86 sq ft



Floor Plan produced for Philip Wooller by Mays Floorplans © . Tel 020 3397 4594
Illustration for identification purposes only, not to scale
All measurements are maximum, and include wardrobes and window bays where applicable

PHILIP WOOLLER

FOR SALE

IMPORTANT NOTICE

1. Particulars: These particulars are not an offer or contract, nor part of one. You should not rely on statements by Philip Wooller Ltd in the particulars or by word of mouth or in writing ('information') as being factually accurate about the property, its condition or its value. Neither Philip Wooller Ltd nor any joint agent has any authority to make any representations about the property, and accordingly any information given is entirely without responsibility on the part of the agents, seller(s) or lessor(s).

2. Photos etc: The photographs show

only certain parts of the property as they appeared at the time they were taken. Areas, measurements and distances given are approximate only.

3. Regulations etc: Any reference to alternations to, or use of, any part of the property does not mean that any necessary planning, building regulations or other consent has been obtained. A buyer or lessee must find out by inspection or in other ways that these matters have been properly dealt with and that all information is correct.

4. VAT: The position relating to the property may change without notice.